

Issue topic: International perspectives on social education

WEBINAR

Webinar

How to develop strategic partnerships – A WEBINAR for educators

Eva Janebová, Soňa Nykodýmová

Webinar will walk you through...

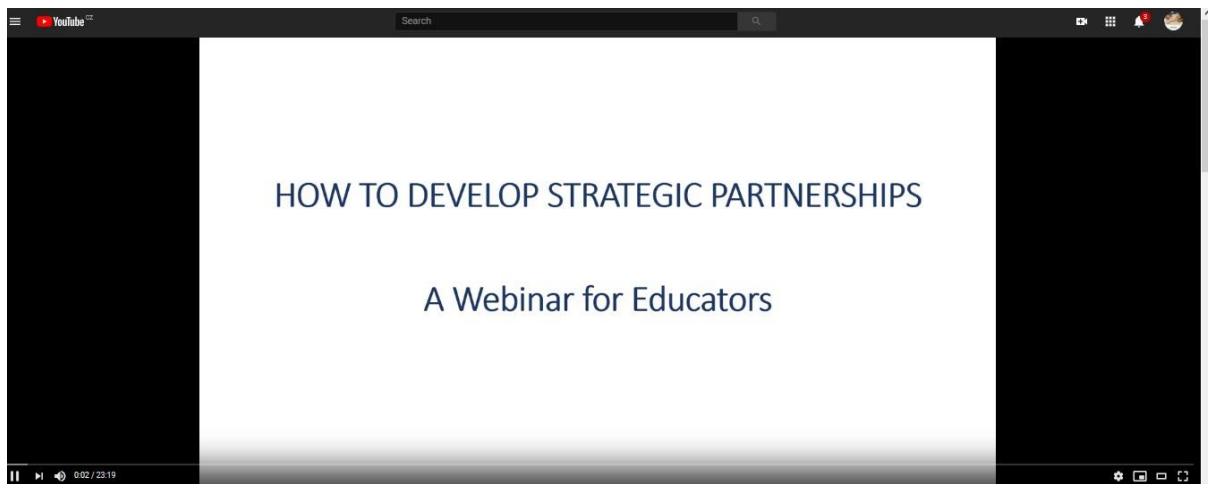
WHAT is a strategic partnership?

WHY build a strategic partnership?

WHO can and needs to be involved

HOW to develop partnerships step by step?

Click [here](#) to listen!



Eva Janebová
Faculty of Education, Masaryk University in Brno

Soňa Nykodýmová
Faculty of Education, Masaryk University in Brno



Eva Janebová is an international educator with scholarly experience from Columbia University and University of Minnesota, Charles University or University of New York Prague. For the last 4 years, she served as the Manager of Strategic Partnerships Project at the Faculty of Education at Masaryk University in Brno in the Czech Republic. Eva has over 18 years of experience as an educator in academia and has served as academic advisor to the Council for International Education Exchange, the Czech Ministry of Education and JAMK in Finland. She has overseen the design of a hundred plus international courses, delivered presentations at NAFFSA, EAIE and trainings related to intercultural and international education and various universities, including the University of Minnesota where she was the very first Mestenhauser Fellow in 2018. Her PhD thesis on Internationalization of Higher Education won the Charles University 2008 Bolzano award for the most distinguished social sciences thesis. Her professional commitment is to build capacities of Czech universities to make internationalization an institution-wide process inclusive to all.



Soňa Nykodýmová is the Office manager and Project Coordinator for Strategic Partnership MUNI 4.0 at the Faculty of Education Masaryk University in Brno. She has a bachelor degree in economics and management in the field of accounting and taxes. Her past working experiences have always been international - either working and living abroad or working locally for an international company like Rochester Public Schools in Minnesota, Symbol Technologies / Motorola s.r.o.